

APPLICANT : BestSub Technologies Co., Ltd.
Rm 810 Exchange Square, No.268 Dongfeng Zhong Road,
Yuexiu District, Guangzhou, 510030, China

REPORT ON THE SUBMITTED SAMPLE SAID TO BE

SAMPLE NAME : Multifunctional Mug Press(4-in-1)
TYPE /MODEL : JTSBO5V
MANUFACTURER : BestSub Technologies Co., Ltd.
TEST REPORT NUMBER : 201203725R
SAMPLE RECEIVED DATE : Mar. 08, 2012
TESTING PERIOD : Mar. 08, 2012 to Mar. 16, 2012

TEST REQUESTED: TO COMBINE THE TEST RESULT FOR THE SUBMITTED SAMPLE

CONCLUSION:

<u>TESTED SAMPES</u>	<u>STANDARD</u>	<u>RESULT</u>
SUBMITTED SAMPLE	EUROPEAN DIRECTIVE 2002/95/EC AND AMENDMENT 2005/618/EC ON THE RESTRICTION OF THE USE OF CERTAIN HAZARDOUS SUBSTANCES (RoHS Directive)	PASS

*****FOR FURTHER DETAILS, PLEASE REFER TO THE FOLLOWING PAGE(S)*****

Signed for and on behalf of ANBOTEK COMPLIANCE LABORATORY LIMITED

Written by pheros Hu

Inspected by Terry Tian

Approved Jeff Zhu



This Test Report is issued by the Company subject to its General Conditions of Service printed overleaf. Attention is drawn to the limitations of liability, indemnification and jurisdictional issues defined therein. The results shown in this report refer only to the sample(s) tested unless otherwise stated. This Test Report cannot be reproduced, except in full, without prior written permission of the company

Anbotek Compliance Laboratory Limited

Testing method:

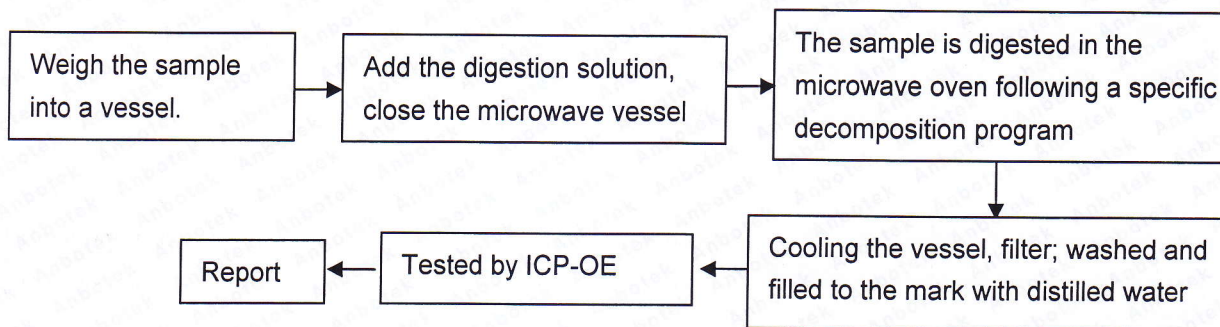
Testing Item	Measuring method	Instrument	Report Limit
Cadmium (Cd)	EN 1122B	ICP-AES	2 mg/kg
Lead (Pb)	EPA 3050B	ICP-AES	2 mg/kg
Mercury (Hg)	EPA 3052	ICP-AES	2 mg/kg
Chromium(VI) [Cr(VI)]	EPA 3060A	UV-VIS	2 mg/kg
Polybrominated Biphenyl (PBB)	83/264/EEC	GC/MS	5 mg/kg
Polybrominated Diphenylether (PBDE)	83/264/EEC	GC/MS	5 mg/kg

Method detection Limits:

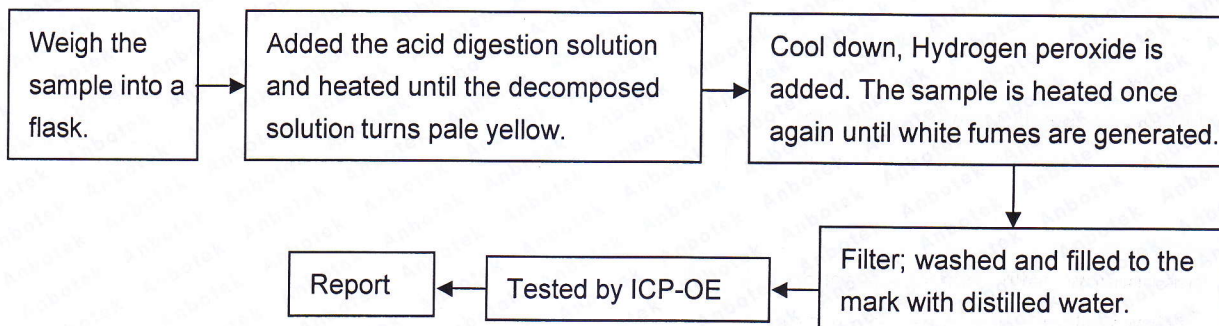
Test Item	Unit	Acceptable Limit
Cadmium (Cd)	ppm	100
Lead (Pb)	ppm	1000
Mercury (Hg)	ppm	1000
Chromium(VI) [Cr(VI)]	ppm	1000
Polybrominated Biphenyl (PBB)	ppm	1000
Polybrominated Diphenylether (PBDE)	ppm	1000

Test flow:

1. To Determine lead Content:



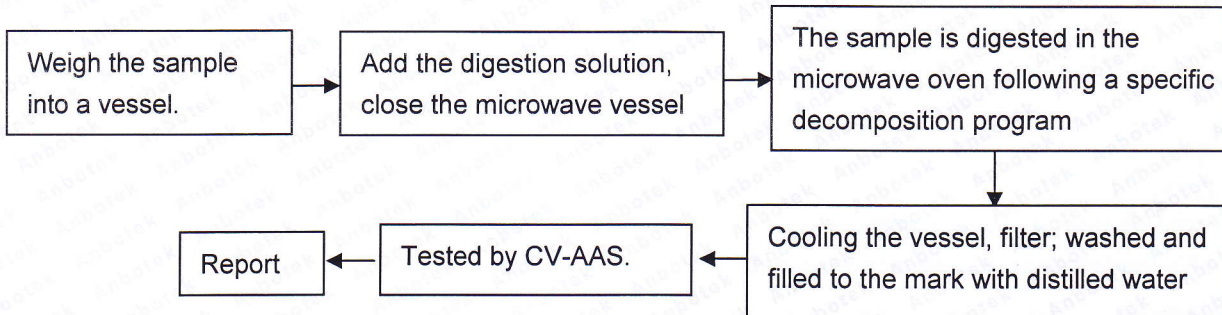
2. To Determine Cadmium Content:



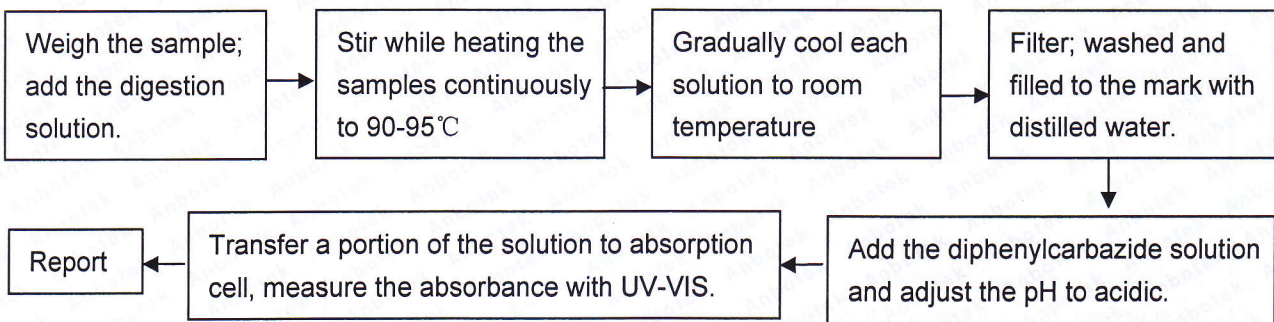
This Test Report is issued by the Company subject to its General Conditions of Service printed overleaf. Attention is drawn to the limitations of liability, indemnification and jurisdictional issues defined therein. The results shown in this report refer only to the sample(s) tested unless otherwise stated. This Test Report cannot be reproduced, except in full, without prior written permission of the company

Anbotek Compliance Laboratory Limited

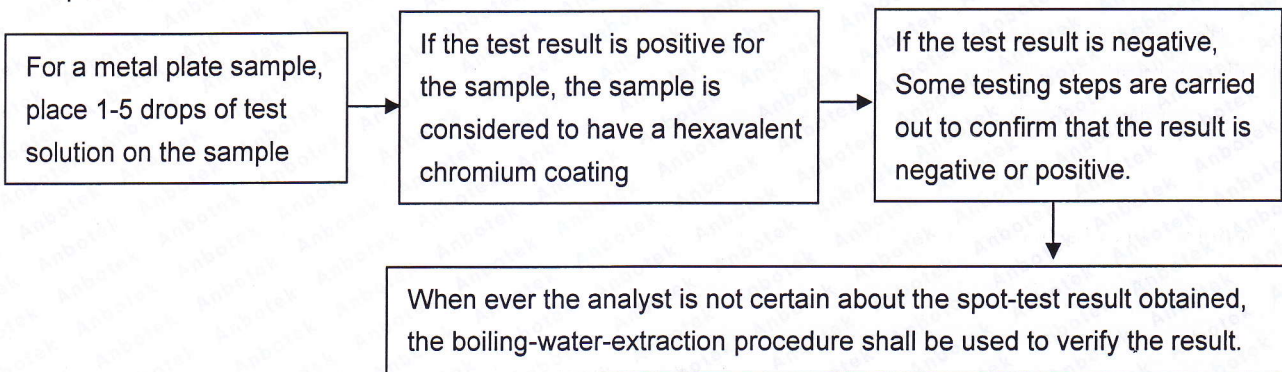
3. To Determine Mercury Content:



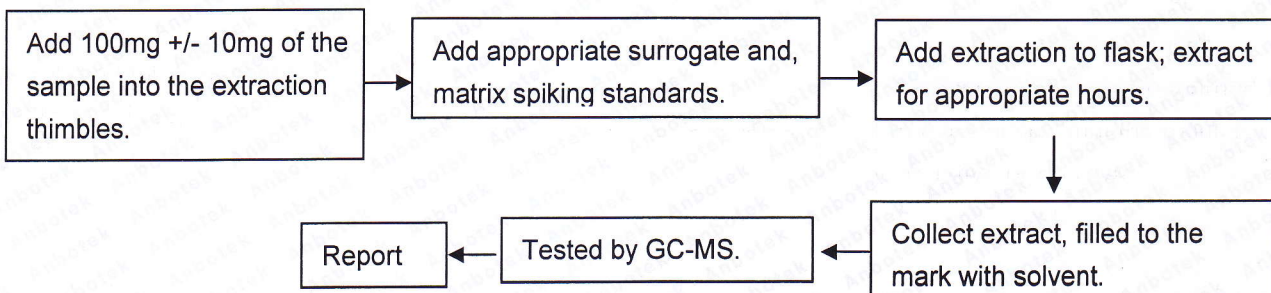
4. To Determine Hexavalent Chromium Content:



5. To Determine Hexavalent Chromium Content in metals:
spot-test:



6. To Determine PBBs / PBDEs Content:



This Test Report is issued by the Company subject to its General Conditions of Service printed overleaf. Attention is drawn to the limitations of liability, indemnification and jurisdictional issues defined therein. The results shown in this report refer only to the sample(s) tested unless otherwise stated. This Test Report cannot be reproduced, except in full, without prior written permission of the company

Test Results

Item	Unit	MDL	<u>No.</u> 1	<u>No.</u> 2	<u>No.</u> 3-1	<u>No.</u> 3-2	<u>No.</u> 4-1
Lead Content (Pb)	ppm	2	N.D.	N.D.	N.D.	N.D.	N.D.
Cadmium (Cd)	ppm	2	N.D.	N.D.	N.D.	N.D.	N.D.
Mercury Content(Hg)	ppm	2	N.D.	N.D.	N.D.	N.D.	N.D.
Hexavalent Chromium Content [Cr(VI)]	ppm	2	N.D.	Negative	N.D.	Negative	N.D.
Flame Retardants							
Polybrominated biphenyls (PBBs)	ppm	5	N.D.	N.A.	N.D.	N.A.	N.D.
Polybrominated Diphenylethers(PBDEs)	ppm	5	N.D.	N.A.	N.D.	N.A.	N.D.

Item	Unit	MDL	<u>No.</u> 4-2	<u>No.</u> 5-1	<u>No.</u> 5-2	<u>No.</u> 6-1	<u>No.</u> 6-2
Lead Content (Pb)	ppm	2	N.D.	N.D.	N.D.	25	N.D.
Cadmium (Cd)	ppm	2	N.D.	N.D.	N.D.	N.D.	N.D.
Mercury Content(Hg)	ppm	2	N.D.	N.D.	N.D.	N.D.	N.D.
Hexavalent Chromium Content [Cr(VI)]	ppm	2	Negative	N.D.	Negative	N.D.	Negative
Flame Retardants							
Polybrominated biphenyls (PBBs)	ppm	5	N.A.	N.D.	N.A.	N.D.	N.A.
Polybrominated Diphenylethers(PBDEs)	ppm	5	N.A.	N.D.	N.A.	N.D.	N.A.

Item	Unit	MDL	<u>No.</u> 7-1	<u>No.</u> 7-2	<u>No.</u> 7-3	<u>No.</u> 7-4	<u>No.</u> 8-1
Lead Content (Pb)	ppm	2	N.D.	N.D.	N.D.	N.D.	N.D.
Cadmium (Cd)	ppm	2	N.D.	N.D.	N.D.	N.D.	N.D.
Mercury Content(Hg)	ppm	2	N.D.	N.D.	N.D.	N.D.	N.D.
Hexavalent Chromium Content [Cr(VI)]	ppm	2	Negative	Negative	Negative	N.D.	N.D.
Flame Retardants							
Polybrominated biphenyls (PBBs)	ppm	5	N.A.	N.A.	N.A.	N.D.	N.D.
Polybrominated Diphenylethers(PBDEs)	ppm	5	N.A.	N.A.	N.A.	N.D.	N.D.

This Test Report is issued by the Company subject to its General Conditions of Service printed overleaf. Attention is drawn to the limitations of liability, indemnification and jurisdictional issues defined therein. The results shown in this report refer only to the sample(s) tested unless otherwise stated. This Test Report cannot be reproduced, except in full, without prior written permission of the company

Anbotek Compliance Laboratory Limited

RoHS Test Report No. 201203725R Date: Mar. 16, 2012 Page5 of 14

Item	Unit	MDL	<u>No.</u> <u>8-2</u>	<u>No.</u> <u>9-1</u>	<u>No.</u> <u>9-2</u>	<u>No.</u> <u>10-1</u>	<u>No.</u> <u>10-2</u>
Lead Content (Pb)	ppm	2	N.D.	N.D.	N.D.	N.D.	N.D.
Cadmium (Cd)	ppm	2	N.D.	N.D.	N.D.	N.D.	N.D.
Mercury Content(Hg)	ppm	2	N.D.	N.D.	N.D.	N.D.	N.D.
Hexavalent Chromium Content [Cr(VI)]	ppm	2	Negative	N.D.	Negative	N.D.	Negative
Flame Retardants							
Polybrominated biphenyls (PBBs)	ppm	5	N.A.	N.D.	N.A.	N.D.	N.A.
Polybrominated Diphenylethers(PBDEs)	ppm	5	N.A.	N.D.	N.A.	N.D.	N.A.

Item	Unit	MDL	<u>No.</u> <u>11-1</u>	<u>No.</u> <u>11-2</u>	<u>No.</u> <u>12-1</u>	<u>No.</u> <u>12-2</u>	<u>No.</u> <u>13-1</u>
Lead Content (Pb)	ppm	2	N.D.	N.D.	N.D.	N.D.	N.D.
Cadmium (Cd)	ppm	2	N.D.	N.D.	N.D.	N.D.	N.D.
Mercury Content(Hg)	ppm	2	N.D.	N.D.	N.D.	N.D.	N.D.
Hexavalent Chromium Content [Cr(VI)]	ppm	2	N.D.	Negative	N.D.	Negative	N.D.
Flame Retardants							
Polybrominated biphenyls (PBBs)	ppm	5	N.D.	N.A.	N.D.	N.A.	N.D.
Polybrominated Diphenylethers(PBDEs)	ppm	5	N.D.	N.A.	N.D.	N.A.	N.D.

Item	Unit	MDL	<u>No.</u> <u>13-2</u>	<u>No.</u> <u>14-1</u>	<u>No.</u> <u>14-2</u>	<u>No.</u> <u>14-3</u>	<u>No.</u> <u>14-4</u>
Lead Content (Pb)	ppm	2	N.D.	N.D.	N.D.	N.D.	N.D.
Cadmium (Cd)	ppm	2	N.D.	N.D.	N.D.	N.D.	N.D.
Mercury Content(Hg)	ppm	2	N.D.	N.D.	N.D.	N.D.	N.D.
Hexavalent Chromium Content [Cr(VI)]	ppm	2	Negative	N.D.	N.D.	Negative	Negative
Flame Retardants							
Polybrominated biphenyls (PBBs)	ppm	5	N.A.	N.D.	N.D.	N.A.	N.A.
Polybrominated Diphenylethers(PBDEs)	ppm	5	N.A.	N.D.	N.D.	N.A.	N.A.

This Test Report is issued by the Company subject to its General Conditions of Service printed overleaf. Attention is drawn to the limitations of liability, indemnification and jurisdictional issues defined therein. The results shown in this report refer only to the sample(s) tested unless otherwise stated. This Test Report cannot be reproduced, except in full, without prior written permission of the company

Anbotek Compliance Laboratory Limited

Address: 1/F, 1/Building, SEC Industrial Park, No.4 Qianhai Road, Nanshan District, Shenzhen, 518054, China
Tel: (86) 755-26014771 Fax: (86) 755-26014772 Email: service@anbotek.com Http://www.anbotek.com

RoHS Test Report No. 201203725R Date: Mar. 16, 2012 Page 6 of 14

Item	Unit	MDL	<u>No.</u> <u>15-1</u>	<u>No.</u> <u>15-2</u>	<u>No.</u> <u>15-3</u>	<u>No.</u> <u>15-4</u>	<u>No.</u> <u>15-5</u>
Lead Content (Pb)	ppm	2	N.D.	N.D.	N.D.	N.D.	N.D.
Cadmium (Cd)	ppm	2	N.D.	N.D.	N.D.	N.D.	N.D.
Mercury Content(Hg)	ppm	2	N.D.	N.D.	N.D.	N.D.	N.D.
Hexavalent Chromium Content [Cr(VI)]	ppm	2	Negative	Negative	N.D.	N.D.	Negative
Flame Retardants							
Polybrominated biphenyls (PBBs)	ppm	5	N.A.	N.A.	N.D.	N.D.	N.A.
Polybrominated Diphenylethers(PBDEs)	ppm	5	N.A.	N.A.	N.D.	N.D.	N.A.

Item	Unit	MDL	<u>No.</u> <u>15-6</u>	<u>No.</u> <u>15-7</u>	<u>No.</u> <u>15-8</u>	<u>No.</u> <u>16</u>	<u>No.</u> <u>17-1</u>
Lead Content (Pb)	ppm	2	N.D.	N.D.	N.D.	N.D.	N.D.
Cadmium (Cd)	ppm	2	N.D.	N.D.	N.D.	N.D.	N.D.
Mercury Content(Hg)	ppm	2	N.D.	N.D.	N.D.	N.D.	N.D.
Hexavalent Chromium Content [Cr(VI)]	ppm	2	N.D.	N.D.	Negative	Negative	N.D.
Flame Retardants							
Polybrominated biphenyls (PBBs)	ppm	5	N.D.	N.D.	N.A.	N.A.	N.D.
Polybrominated Diphenylethers(PBDEs)	ppm	5	N.D.	N.D.	N.A.	N.A.	N.D.

Item	Unit	MDL	<u>No.</u> <u>17-2</u>	<u>No.</u> <u>18-1</u>	<u>No.</u> <u>18-2</u>	<u>No.</u> <u>19-1</u>	<u>No.</u> <u>19-2</u>
Lead Content (Pb)	ppm	2	N.D.	N.D.	N.D.	N.D.	N.D.
Cadmium (Cd)	ppm	2	N.D.	N.D.	N.D.	N.D.	N.D.
Mercury Content(Hg)	ppm	2	N.D.	N.D.	N.D.	N.D.	N.D.
Hexavalent Chromium Content [Cr(VI)]	ppm	2	Negative	N.D.	Negative	N.D.	Negative
Flame Retardants							
Polybrominated biphenyls (PBBs)	ppm	5	N.A.	N.D.	N.A.	N.D.	N.A.
Polybrominated Diphenylethers(PBDEs)	ppm	5	N.A.	N.D.	N.A.	N.D.	N.A.

This Test Report is issued by the Company subject to its General Conditions of Service printed overleaf. Attention is drawn to the limitations of liability, indemnification and jurisdictional issues defined therein. The results shown in this report refer only to the sample(s) tested unless otherwise stated. This Test Report cannot be reproduced, except in full, without prior written permission of the company

Anbotek Compliance Laboratory Limited

Address: 1/F, 1/Building, SEC Industrial Park, No.4 Qianhai Road, Nanshan District, Shenzhen, 518054, China
 Tel: (86) 755-26014771 Fax: (86) 755-26014772 Email: service@anbotek.com Http://www.anbotek.com

RoHS Test Report No. 201203725R Date: Mar. 16, 2012 Page 7 of 14

Item	Unit	MDL	<u>No.</u> <u>19-3</u>	<u>No.</u> <u>20-1</u>	<u>No.</u> <u>20-2</u>	<u>No.</u> <u>20-3</u>	<u>No.</u> <u>20-4</u>
Lead Content (Pb)	ppm	2	N.D.	N.D.	N.D.	N.D.	N.D.
Cadmium (Cd)	ppm	2	N.D.	N.D.	N.D.	N.D.	N.D.
Mercury Content(Hg)	ppm	2	N.D.	N.D.	N.D.	N.D.	N.D.
Hexavalent Chromium Content [Cr(VI)]	ppm	2	Negative	N.D.	Negative	N.D.	N.D.
Flame Retardants							
Polybrominated biphenyls (PBBs)	ppm	5	N.A.	N.D.	N.A.	N.D.	N.D.
Polybrominated Diphenylethers(PBDEs)	ppm	5	N.A.	N.D.	N.A.	N.D.	N.D.

Item	Unit	MDL	<u>No.</u> <u>21-1</u>	<u>No.</u> <u>21-2</u>	<u>No.</u> <u>21-3</u>	<u>No.</u> <u>22-1</u>	<u>No.</u> <u>22-2</u>
Lead Content (Pb)	ppm	2	N.D.	N.D.	N.D.	N.D.	N.D.
Cadmium (Cd)	ppm	2	N.D.	N.D.	N.D.	N.D.	N.D.
Mercury Content(Hg)	ppm	2	N.D.	N.D.	N.D.	N.D.	N.D.
Hexavalent Chromium Content [Cr(VI)]	ppm	2	N.D.	Negative	Negative	N.D.	Negative
Flame Retardants							
Polybrominated biphenyls (PBBs)	ppm	5	N.D.	N.A.	N.A.	N.D.	N.A.
Polybrominated Diphenylethers(PBDEs)	ppm	5	N.D.	N.A.	N.A.	N.D.	N.A.

Item	Unit	MDL	<u>No.</u> <u>22-3</u>	<u>No.</u> <u>23-1</u>	<u>No.</u> <u>23-2</u>	<u>No.</u> <u>24-1</u>	<u>No.</u> <u>24-2</u>
Lead Content (Pb)	ppm	2	N.D.	N.D.	N.D.	N.D.	N.D.
Cadmium (Cd)	ppm	2	N.D.	N.D.	N.D.	N.D.	N.D.
Mercury Content(Hg)	ppm	2	N.D.	N.D.	N.D.	N.D.	N.D.
Hexavalent Chromium Content [Cr(VI)]	ppm	2	Negative	N.D.	Negative	N.D.	N.D.
Flame Retardants							
Polybrominated biphenyls (PBBs)	ppm	5	N.A.	N.D.	N.A.	N.D.	N.D.
Polybrominated Diphenylethers(PBDEs)	ppm	5	N.A.	N.D.	N.A.	N.D.	N.D.

This Test Report is issued by the Company subject to its General Conditions of Service printed overleaf. Attention is drawn to the limitations of liability, indemnification and jurisdictional issues defined therein. The results shown in this report refer only to the sample(s) tested unless otherwise stated. This Test Report cannot be reproduced, except in full, without prior written permission of the company

Anbotek Compliance Laboratory Limited

Address: 1/F, 1 /Building, SEC Industrial Park, No.4 Qianhai Road, Nanshan District, Shenzhen, 518054, China
 Tel: (86) 755-26014771 Fax : (86) 755-26014772 Email: service@anbotek.com Http://www.anbotek.com

RoHS Test Report No. 201203725R Date: Mar. 16, 2012 Page 8 of 14

Item	Unit	MDL	<u>No.</u> <u>24-3</u>	<u>No.</u> <u>24-4</u>	<u>No.</u> <u>24-5</u>	<u>No.</u> <u>24-6</u>	<u>No.</u> <u>24-7</u>
Lead Content (Pb)	ppm	2	N.D.	N.D.	N.D.	N.D.	N.D.
Cadmium (Cd)	ppm	2	N.D.	N.D.	N.D.	N.D.	N.D.
Mercury Content(Hg)	ppm	2	N.D.	N.D.	N.D.	N.D.	N.D.
Hexavalent Chromium Content [Cr(VI)]	ppm	2	N.D.	N.D.	Negative	Negative	Negative
Flame Retardants							
Polybrominated biphenyls (PBBs)	ppm	5	N.D.	N.D.	N.A.	N.A.	N.A.
Polybrominated Diphenylethers(PBDEs)	ppm	5	N.D.	N.D.	N.A.	N.A.	N.A.

Item	Unit	MDL	<u>No.</u> <u>25-1</u>	<u>No.</u> <u>25-2</u>	<u>No.</u> <u>25-3</u>	<u>No.</u> <u>25-4</u>	<u>No.</u> <u>25-5</u>
Lead Content (Pb)	ppm	2	N.D.	N.D.	N.D.	N.D.	N.D.
Cadmium (Cd)	ppm	2	N.D.	N.D.	N.D.	N.D.	N.D.
Mercury Content(Hg)	ppm	2	N.D.	N.D.	N.D.	N.D.	N.D.
Hexavalent Chromium Content [Cr(VI)]	ppm	2	N.D.	N.D.	N.D.	Negative	Negative
Flame Retardants							
Polybrominated biphenyls (PBBs)	ppm	5	N.D.	N.D.	N.D.	N.A.	N.A.
Polybrominated Diphenylethers(PBDEs)	ppm	5	N.D.	N.D.	N.D.	N.A.	N.A.

Item	Unit	MDL	<u>No.</u> <u>26</u>	<u>No.</u> <u>27</u>	<u>No.</u> <u>28</u>	<u>No.</u> <u>29</u>	<u>No.</u> <u>30</u>
Lead Content (Pb)	ppm	2	N.D.	N.D.	N.D.	N.D.	N.D.
Cadmium (Cd)	ppm	2	N.D.	N.D.	N.D.	N.D.	N.D.
Mercury Content(Hg)	ppm	2	N.D.	N.D.	N.D.	N.D.	N.D.
Hexavalent Chromium Content [Cr(VI)]	ppm	2	Negative	N.D.	Negative	N.D.	Negative
Flame Retardants							
Polybrominated biphenyls (PBBs)	ppm	5	N.A.	N.D.	N.A.	N.D.	N.A.
Polybrominated Diphenylethers(PBDEs)	ppm	5	N.A.	N.D.	N.A.	N.D.	N.A.

This Test Report is issued by the Company subject to its General Conditions of Service printed overleaf. Attention is drawn to the limitations of liability, indemnification and jurisdictional issues defined therein. The results shown in this report refer only to the sample(s) tested unless otherwise stated. This Test Report cannot be reproduced, except in full, without prior written permission of the company.

Anbotek Compliance Laboratory Limited

Address: 1/F, 1/Building, SEC Industrial Park, No.4 Qianhai Road, Nanshan District, Shenzhen, 518054, China
Tel: (86) 755-26014771 Fax: (86) 755-26014772 Email: service@anbotek.com Http://www.anbotek.com

Item	Unit	MDL	No. 31	No. 32	No. 33	No. 34	No. 35
Lead Content (Pb)	ppm	2	N.D.	N.D.	N.D.	N.D.	N.D.
Cadmium (Cd)	ppm	2	N.D.	N.D.	N.D.	N.D.	N.D.
Mercury Content(Hg)	ppm	2	N.D.	N.D.	N.D.	N.D.	N.D.
Hexavalent Chromium Content [Cr(VI)]	ppm	2	Negative	Negative	N.D.	N.D.	N.D.
Flame Retardants							
Polybrominated biphenyls (PBBs)	ppm	5	N.A.	N.A.	N.D.	N.D.	N.D.
Polybrominated Diphenylethers(PBDEs)	ppm	5	N.A.	N.A.	N.D.	N.D.	N.D.

Item	Unit	MDL	No. 36	No. 37	No. 38		
Lead Content (Pb)	ppm	2	N.D.	N.D.	N.D.		
Cadmium (Cd)	ppm	2	N.D.	N.D.	N.D.		
Mercury Content(Hg)	ppm	2	N.D.	N.D.	N.D.		
Hexavalent Chromium Content [Cr(VI)]	ppm	2	N.D.	Negative	N.D.		
Flame Retardants							
Polybrominated biphenyls (PBBs)	ppm	5	N.D.	N.A.	N.D.		
Polybrominated Diphenylethers(PBDEs)	ppm	5	N.D.	N.A.	N.D.		

- NOTE: (1) ppm=mg/kg.
 (2) N.D.= NOT DETECTED (<MDL)
 (3) N.A.= NOT APPLICABLE
 (4) Negative = Absence of CrVI coating

DISCLAIM: Anbotek take no responsibility for any mistakes caused by inaccurate and /or invalid information submitted by the applicant.

This Test Report is issued by the Company subject to its General Conditions of Service printed overleaf. Attention is drawn to the limitations of liability, indemnification and jurisdictional issues defined therein. The results shown in this report refer only to the sample(s) tested unless otherwise stated. This Test Report cannot be reproduced, except in full, without prior written permission of the company

Anbotek Compliance Laboratory Limited

Address:1/F, 1 /Building, SEC Industrial Park, No.4 Qianhai Road, Nanshan District, Shenzhen, 518054, China
 Tel: (86) 755-26014771 Fax :(86) 755-26014772 Email: service@anbotek.com Http://www.anbotek.com

SAMPLE APPEARANCE DESCRIPTION:

Item No.	Part Name	Description
1	PCB	Green "pcb" (mixed)
2	TIN	Silvery metal
3	RESISTOR	---
3-1	BODY	Grey body w/ multicolor loop
3-2	PIN	Silvery metal pin
4	RESISTOR	---
4-1	BODY	Yellow body w/ multicolor loop
4-2	PIN	Silvery metal pin
5	X CAPACITOR	---
5-1	BODY	Yellow body w/ black printing (mixed)
5-2	PIN	Silvery metal pin
6	CAPACITOR	---
6-1	BODY	Red body w/ black printing (mixed)
6-2	PIN	Silvery metal pin
7	ELECTROLYTIC CAPACITOR	---
7-1	FOIL	Gray metal
7-2	PIN	Silvery metal pin
7-3	ALUMINIUM	Silvery metal shell
7-4	RUBBER	Black/smalt rubber w/ grey printing
8	DIODE	---
8-1	BODY	Black plastic body
8-2	PIN	Silvery metal pin
9	DYNATRON	---
9-1	BODY	Black body w/ yellow printing
9-2	PIN	Silvery metal pin
10	LED	---
10-1	BODY	Red palstic
10-2	PIN	Silvery metal
11	RECTIFIER BRIDGE	---
11-1	BODY	Black body w/ white printing
11-2	PIN	Silvery metal pin
12	IC	---

This Test Report is issued by the Company subject to its General Conditions of Service printed overleaf. Attention is drawn to the limitations of liability, indemnification and jurisdictional issues defined therein. The results shown in this report refer only to the sample(s) tested unless otherwise stated. This Test Report cannot be reproduced, except in full, without prior written permission of the company

Anbotek Compliance Laboratory Limited

Address: 1/F, 1/Building, SEC Industrial Park, No.4 Qianhai Road, Nanshan District, Shenzhen, 518054, China
Tel: (86) 755-26014771 Fax: (86) 755-26014772 Email: service@anbotek.com Http://www.anbotek.com

RoHS Test Report No. 201203725R Date: Mar. 16, 2012 Page 11 of 14

Item No.	Part Name	Description
12-1	BODY	Black body w/ yellow printing
12-2	PIN	Silvery metal pin
13	IC5	---
13-1	BODY	White body w/ black printing
13-2	PIN	Silvery metal pin
14	FUSE	---
14-1	BODY	Glass tube
14-2	COVER	Black plastic
14-3	WIRE	Silvery metal wire
14-4	PIN	Silvery metal pin
15	TRANSFORMER	---
15-1	MAGNET WIRE	Copper-colored metal wire
15-2	CORE	Silvery metal cores
15-3	BOBBIN	White bobbin
15-4	POLYESTER MAYLAR TAPE(LIGHT YELLOW)	Yellow/blue adhesive tape
15-5	COPPER	Copper metal wire
15-6	PLASTIC	PC 940a-116
15-7	PLASTIC JACKET	Plastic
15-8	WIRE CORE	Metal
16	COOLING FIN	Silvery metal
17	CONNECTOR	---
17-1	BODY	White plastic
17-2	PIN	Silvery metal pin
18	CRYSTAL OSCILLATOR	---
18-1	BODY	Brown body
18-2	PIN	Silvery metal pin
19	BUZZER	---
19-1	BODY	Black plastic
19-2	CORE	Silvery metal
19-3	PIN	Silvery metal
20	DIGITAL DISPLAY	---
20-1	ENCLOSURE	White/black plastic
20-2	PIN	Silvery metal

This Test Report is issued by the Company subject to its General Conditions of Service printed overleaf. Attention is drawn to the limitations of liability, indemnification and jurisdictional issues defined therein. The results shown in this report refer only to the sample(s) tested unless otherwise stated. This Test Report cannot be reproduced, except in full, without prior written permission of the company

Anbotek Compliance Laboratory Limited

Address: 1/F, 1 /Building, SEC Industrial Park, No.4 Qianhai Road, Nanshan District, Shenzhen, 518054, China
Tel: (86) 755-26014771 Fax: (86) 755-26014772 Email: service@anbotek.com Http://www.anbotek.com

RoHS Test Report No. 201203725R Date: Mar. 16, 2012 Page 12 of 14

Item No.	Part Name	Description
20-3	PLASTIC	Transparent plastic
20-4	PAPER	Grey w/ black printing
21	INPUT TERMINAL	---
21-1	BODY	Black plastic
21-2	PLUG FOOT	Silvery metal
21-3	PIN	Silvery metal
22	BUTTON	---
22-1	BODY	Black plastic
22-2	PIECE	Silvery metal
22-3	PIN	Silvery metal
23	POWER SWITCH	---
23-1	BODY	Black plastic
23-2	PIN	Silvery metal
24	POWER LINE	---
24-1	PROTECTIVE RING	Black plastic w/ black printing
24-2	PVC JACKET	Blue jacket
24-3	PVC JACKET	Brown jacket
24-4	PVC JACKET	Yellow jacket
24-5	WIRE	Copper-color metal wire
24-6	PLUG FOOT	Silvery metal
24-7	TERMINAL	Copper-color metal
25	INSIDE WIRE	---
25-1	PVC JACKET	Grey jacket
25-2	PVC JACKET	White jacket
25-3	NYLON STRIP	White/red nylon
25-4	WIRE	Silvery metal wire
25-5	WIRE	Copper-color metal wire
26	ACCESSORY INTERFACE PORT	Silvery metal
27	PRESSURE HANDLE	Black plastic
28	PRESSURE ADJUSTMENT SCREW	Silvery metal
29	SILICON MUG WRAP	Blue plastic
30	METAL PIECE	Silvery metal
31	SCREW	Silvery metal

This Test Report is issued by the Company subject to its General Conditions of Service printed overleaf. Attention is drawn to the limitations of liability, indemnification and jurisdictional issues defined therein. The results shown in this report refer only to the sample(s) tested unless otherwise stated. This Test Report cannot be reproduced, except in full, without prior written permission of the company

Anbotek Compliance Laboratory Limited

Address: 1/F, 1 /Building, SEC Industrial Park, No.4 Qianhai Road, Nanshan District, Shenzhen, 518054, China
Tel: (86) 755-26014771 Fax: (86) 755-26014772 Email: service@anbotek.com Http://www.anbotek.com

RoHS Test Report No. 201203725R Date: Mar. 16, 2012 Page13 of 14

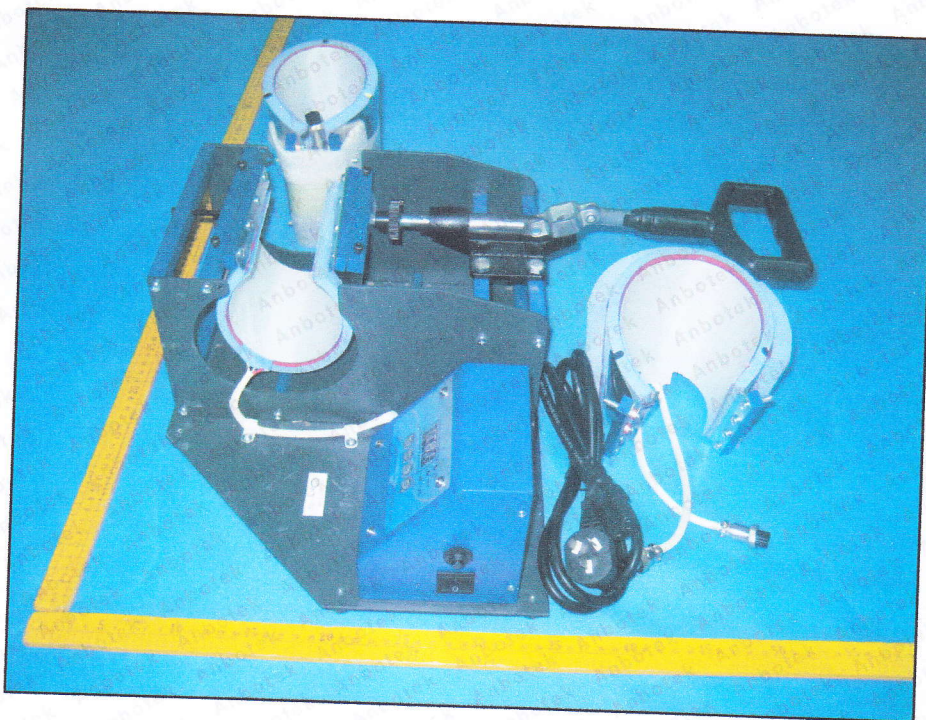
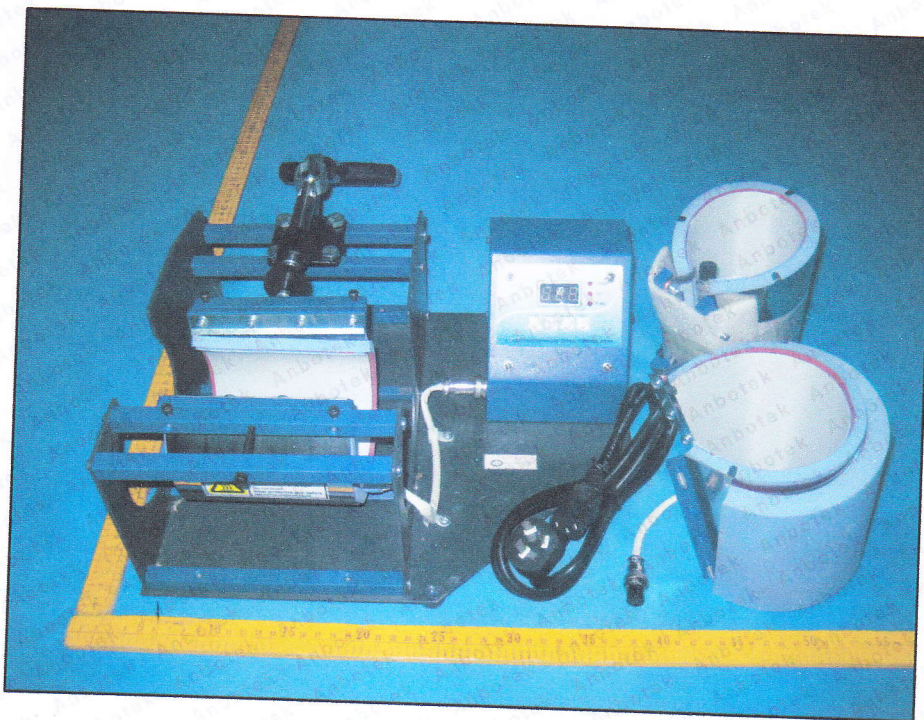
Item No.	Part Name	Description
32	BOLT	Silvery metal
33	FIXITY	White palstic
34	MUCILAGE GLUE	Red mucilage
35	SPACER	Red plastic
36	FOOT	Black plastic
37	LACQUERED METAL	Blue/black metal
38	MARKING	Grey paper w/ black printing

***** End of Report *****

This Test Report is issued by the Company subject to its General Conditions of Service printed overleaf. Attention is drawn to the limitations of liability, indemnification and jurisdictional issues defined therein. The results shown in this report refer only to the sample(s) tested unless otherwise stated. This Test Report cannot be reproduced, except in full, without prior written permission of the company

Anbotek Compliance Laboratory Limited

Address:1/F, 1/Building, SEC Industrial Park, No.4 Qianhai Road, Nanshan District, Shenzhen, 518054, China
Tel: (86) 755-26014771 Fax : (86) 755-26014772 Email: service@anbotek.com Http://www.anbotek.com

APPENDIX**Photograph of Sample**

This Test Report is issued by the Company subject to its General Conditions of Service printed overleaf. Attention is drawn to the limitations of liability, indemnification and jurisdictional issues defined therein. The results shown in this report refer only to the sample(s) tested unless otherwise stated. This Test Report cannot be reproduced, except in full, without prior written permission of the company

Anbotek Compliance Laboratory Limited

Address: 1/F, 1/Building, SEC Industrial Park, No.4 Qianhai Road, Nanshan District, Shenzhen, 518054, China
Tel: (86) 755-26014771 Fax: (86) 755-26014772 Email: service@anbotek.com [Http://www.anbotek.com](http://www.anbotek.com)

CERTIFICATE
Of Conformity
EC Council Directive 2002/95/EC
as last amended by EC Directive 2005/618/EC
Restriction of the Use of Certain Hazardous Substances
in Electrical and Electronic Equipment

Registration No.: AT1203665R

Report No.: 201203725R

Applicant : BestSub Technologies Co., Ltd.
Rm 810 Exchange Square, No.268 Dongfeng Zhong Road,
Yuexiu District, Guangzhou, 510030, China

Manufacturer : BestSub Technologies Co., Ltd.
Rm 810 Exchange Square, No.268 Dongfeng Zhong Road,
Yuexiu District, Guangzhou, 510030, China

Product : Multifunctional Mug Press(4-in-1)

Identification : Model No. : JTSB05V

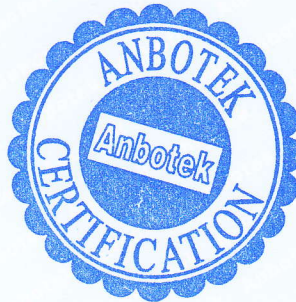
Serial No. : N.A.

Trade Mark : N.A.

The certificate is based on ANBOTEK' S test results and other related test data provided by applicant. Technical report and documentation are at the applicant's disposal. This is to certify that the tested sample is in conformity with all provisions of the RoHS Directive.



Mar. 16, 2012
Date



Certified by

Jeff Zhu
.....
Manager

Anbotek Compliance Laboratory Limited
1/F, 1 /Build, SEC Industrial Park, No. 4 Qianhai Road
Nanshan District, Shenzhen, 518054, China
[Http://www.anbotek.com](http://www.anbotek.com)

Tel: (86)755-26066544
Fax: (86)755-26014772
Email: service@anbotek.com